

BREL motors is part of:



Instruction Brel electronic DC radio motor double shaft for VB/PB/Roman

Type MJE24D

Read the manual before you begin the installation. If these instructions are not followed, this may lead to defects and injury in which warranty can't be claimed.

warning:

Children cannot recognize the dangers of electrical equipment and may therefore not work with it.

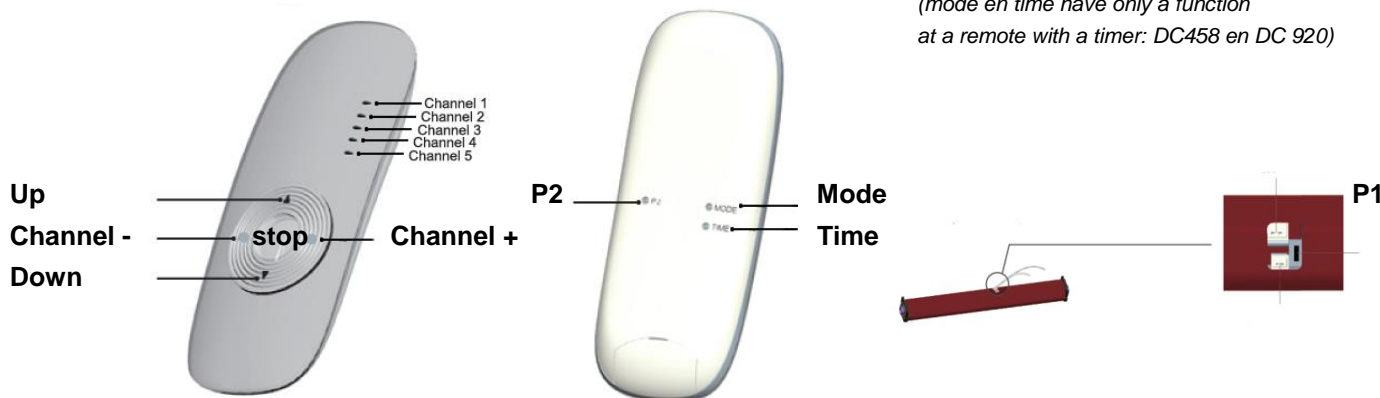
It is important to follow this instruction for your own safety.

1. Do not operate the motor in humid surroundings.
2. The motor must be installed correctly.
3. Keep the antenna in a good condition and do not shorten. The antenna should not come into contact with other metal parts otherwise it will reduce the effect.
4. The motor must be protected from direct moisture influences.
5. The motor should be installed with the motor cable down in order to prevent moisture via the motor cable is running in the motor . See Figure 1
6. It is prohibited to connect two motors on a switch without using a relay control.

Figure 1



(mode en time have only a function at a remote with a timer: DC458 en DC 920)



If you are using a multi-channel transmitter, you cannot program on the shared channel.

Technical data of the motor

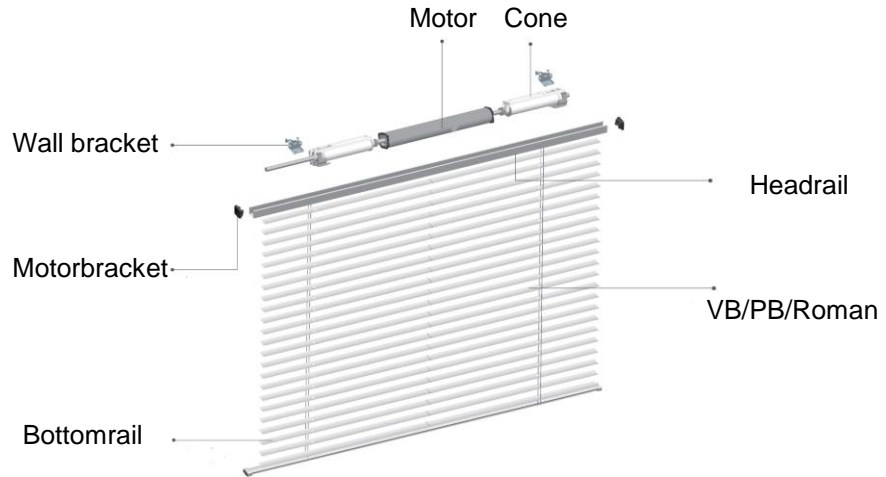
- Motor Voltage : DC 12V
- Maximum ampère charger: 1.0 A
- Power: 10 Watt
- Torque: 0.8 Nm
- Speed: 45 rpm
- Ampèrage: 0.90 A
- Moisture and dust: IP40
- Storage capacity is up to 20 channels
- Working temperature of the motor:
 - Normal use: -10°C tot +40°C
 - Heavy use: -20°C tot +70°C

Type MJE24D

DC 12V
1.0 A
10 Watt
0.8 Nm
45 rpm
0.90 A
IP40



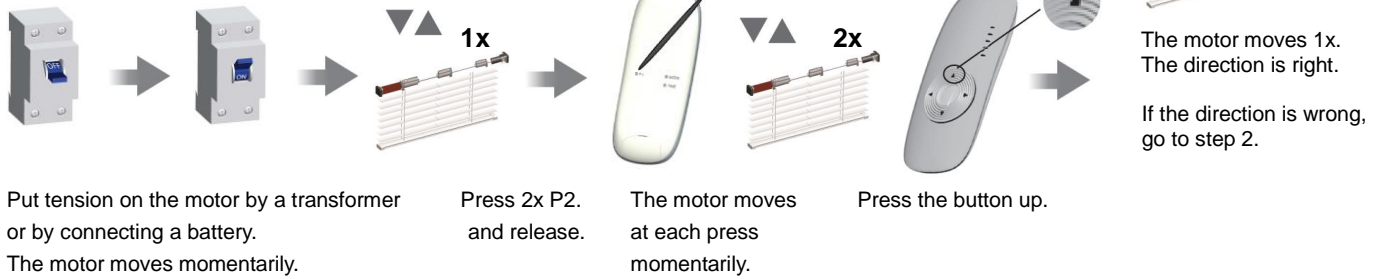
Installing the motor



Step 1 Setting up the first channel

The pairing of the first transmitter can be done in two ways:

Option A



Option B

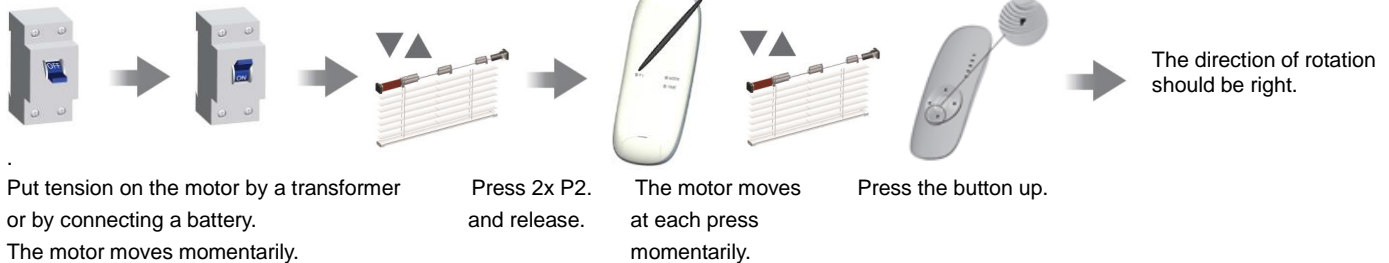


With the above action, all the channels in memory and the final adjustment is deleted. You can also repeat this procedure to reset the motor.

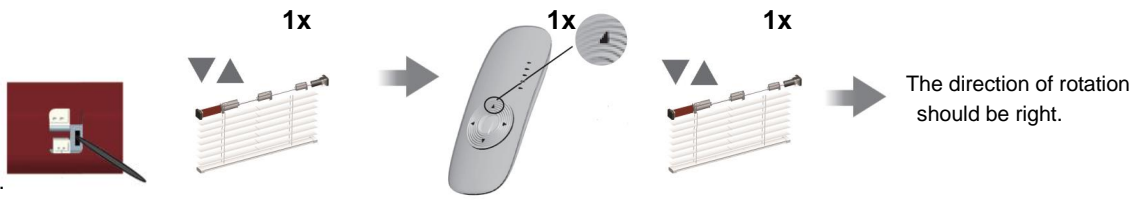
Step 2 Change direction

If the direction is good , skip step 2 and proceed to step 3.

Option A



Option B

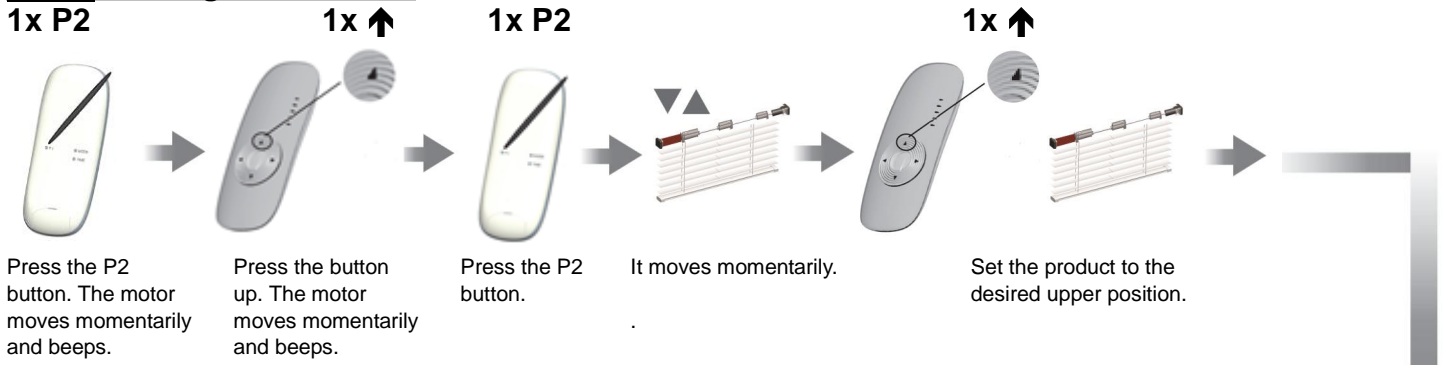


Press P1 1x and release when the product momentarily moves twice, 1x after 3 sec. and again 1x after 6 sec.

Press the button up.

The product goes up.

Step 3 Setting the end limits



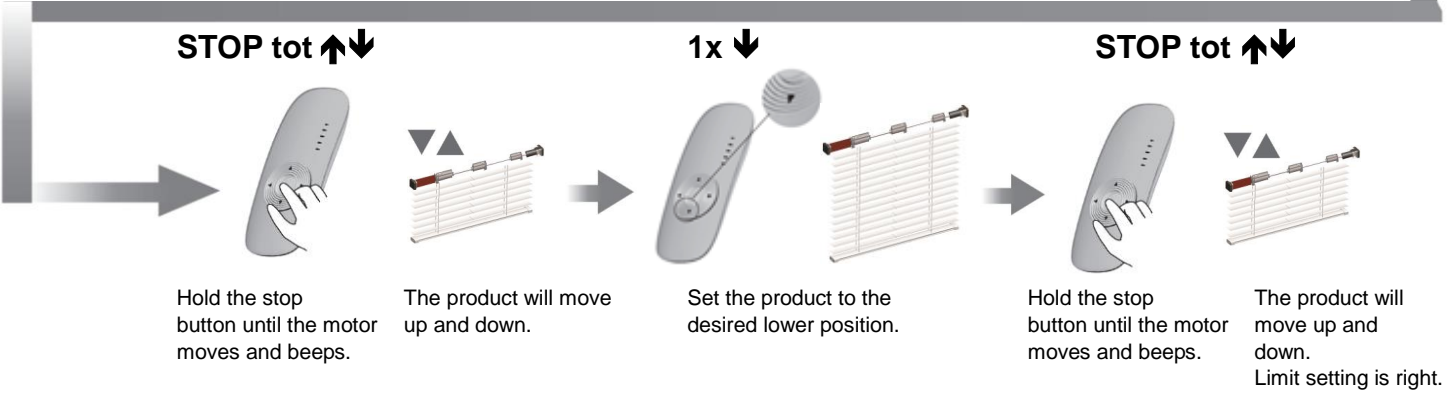
Press the P2 button. The motor moves momentarily and beeps.

Press the button up. The motor moves momentarily and beeps.

Press the P2 button.

It moves momentarily.

Set the product to the desired upper position.



STOP tot ↑↓

1x ↓

STOP tot ↑↓

Hold the stop button until the motor moves and beeps.

The product will move up and down.

Set the product to the desired lower position.

Hold the stop button until the motor moves and beeps.

The product will move up and down. Limit setting is right.

Step 4 pairing new remote while maintaining end limits

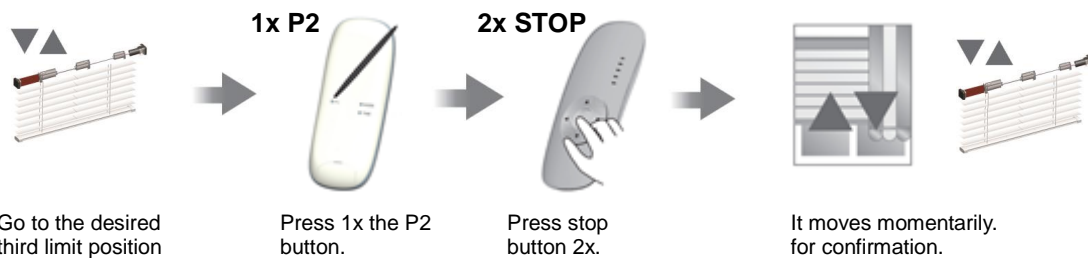


1x P1
Press P1 and hold, until the motor moves up and down.

Press up and down buttons simultaneously, until the motor moves up and down.

Step 5 Setting third limit position

If you press the stop button for more than 3 seconds, the motor will move from any position to the third limit position.



To remove the third limit position, you must go to the third position and repeat above action.

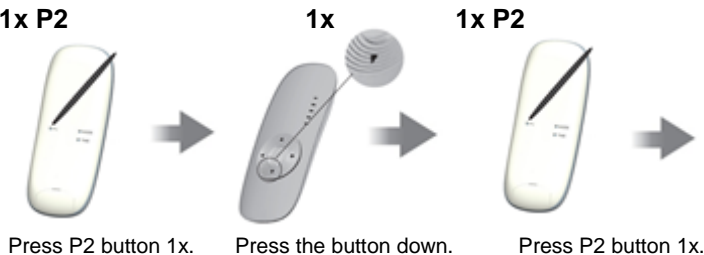
Additional settings

Option A Delete limit position

Deleting the limit position can be done in two ways:

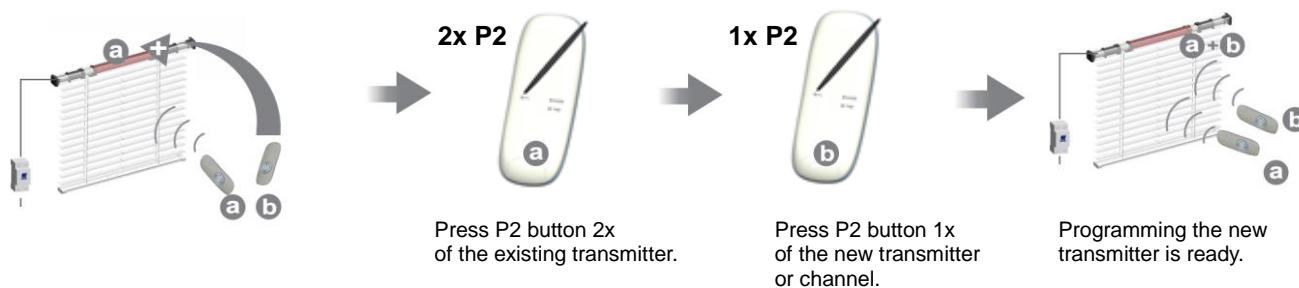
1. When setting up the first channel also the limit setup will be removed.

2. 1x P2



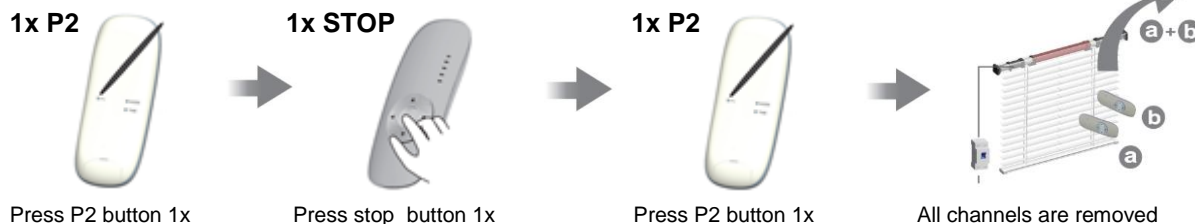
Each time you press a key you hear a beep.
The limit positions are now removed from the memory.
You can now re-read the limit position.

Option B Teaching multiple transmitters (Up to 20 transmitters per receiver)

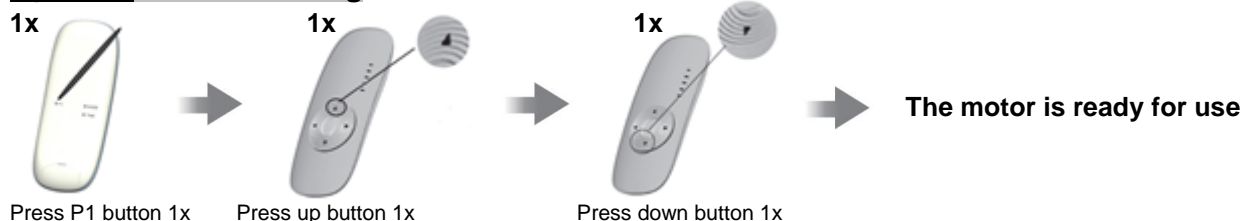


To delete one channel, you must repeat the above operation.

Option C Reset all



Option D Pulse setting



To remove the pulse setting, repeat the above operation.