

Manual vibration sensor

Type DD-510H



Read the manual before starting the installation. If this instruction is not followed, this can lead to damage that is not covered by the warranty.

Attention:

This manual can only be used to connect the sensor to the motor,
NOT to adjust the motor!

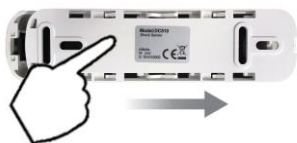
For all manuals go to: www.brel-motors.nl

Technical data of the sensor

Type DD-510H

- | | |
|--|---|
| <ul style="list-style-type: none">• Battery type:• Transmission frequency:• Transmission Power:• Working temperature:• Transmission range: | <p>3V 2x AAA
433,92MHz
10 MW
-20C~55C
200 meters of open field,
35 meters and 2 concrete walls.</p> |
|--|---|

Inserting the batteries



Press down on the bottom and slide open



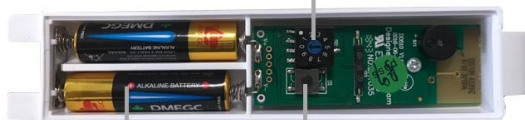
Push and pull up the white tab

Inserting the batteries



Sensor operation

Dial switch




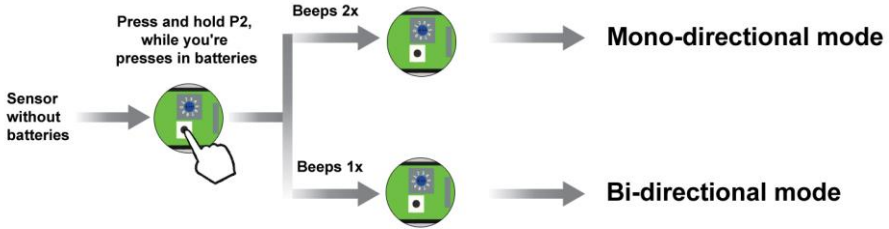
Battery

Setting button

P2

Mono-directional /bi-directional mode switching

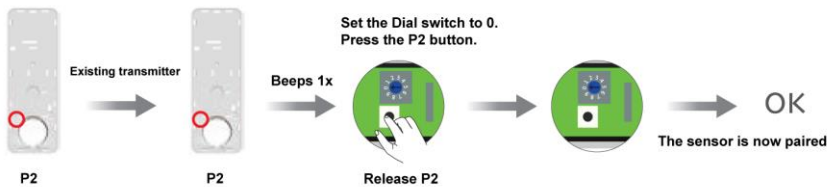
 The bi-directional mode is the factory default setting.



If the motor does not respond, try another mode.

Pairing the sensor in the motor memory

1. After pairing the motor with the DD-510H, in case of vibration, the sensor sends the UP command to close the blinds.
2. There are 9 levels of sensor sensitivity and the sensitivity gradually decreases from 1 to 9 levels. Of which 1 is very sensitive and 9 is least sensitive. At a 0 level there is no sensitivity.
3. The vibration sensor sends the UP command to the motor to close the awning as soon as the vibration is detected. of the sensor has reached the set sensitivity level. Within 30 seconds, the sensor does not send any UP command more if the vibration persists.

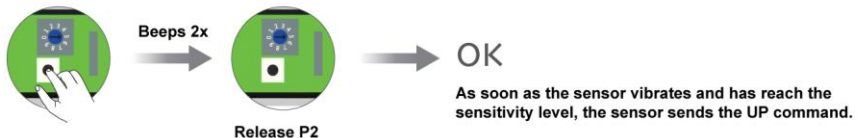


Option: Adjusting the direction of rotation

Direction of rotation UP is the default setting

Direction of rotation UP

Turn on the dial switch on 5 and press the P2 button in, until it beeps 2x.



Direction of rotation DOWN

Turn on the dial switch on 9 and press the P2 button in, until it beeps 2x.

