

BREL motors is part of:

BREL nederland b.v.

Manual Brel 1-channel and 15-channel bi-directional wall transmitter

Type DD-2770H - DD-2773H

Read the manual before you begin the installation. If these instructions are not followed, this may lead to defects and injury in which warranty can't be claimed.

NOTE:

This manual can only be used to connect the hand-held transmitter to the motor, **NOT** to adjust the motor!

For all manuals, visit: www.brel-motors.nl

Technical specifications

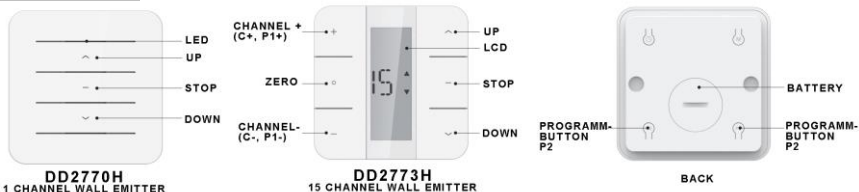
- Battery type:
- Frequency:
- Emission power:
- Emission distance:
- Safety class:
- Moisture and dust resistance:

Type DD-2770H - DD-2773H

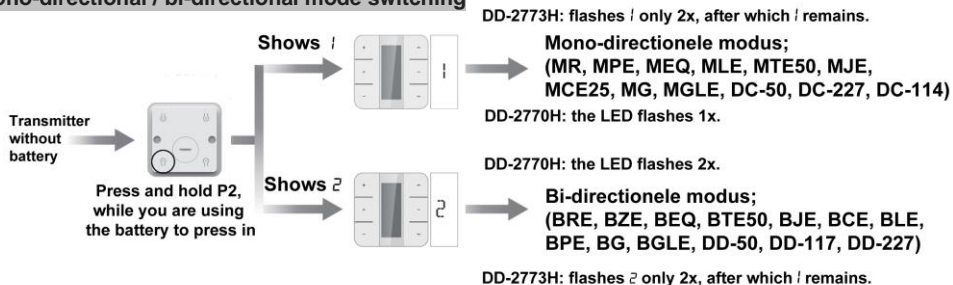
3V 1x CR2430
 433,92MHz
 10 MW
 100 meter open field, 2 walls 35 meter.
 H
 IP44

Button specifications

There are 2x P2 buttons, no matter which one you press.



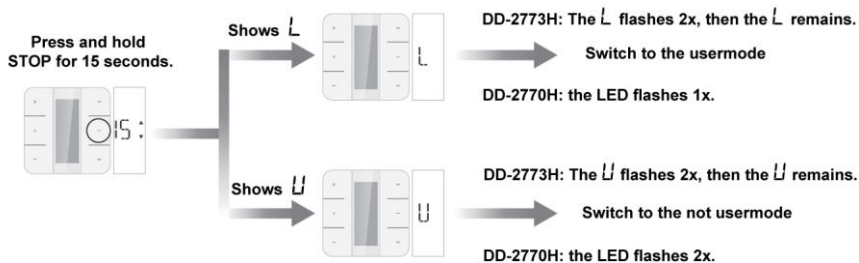
Mono-directional / bi-directional mode switching



If the motor does not respond, try a different mode of operation.

Usermode

When the remote control is locked, you can operate the motor, but not program it.



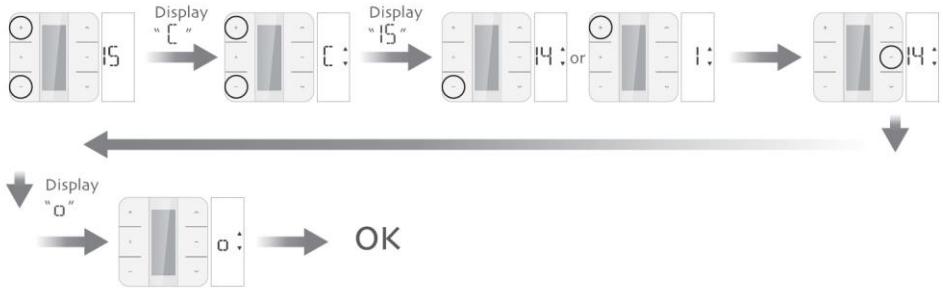
Channel selection

Press C+ and C- simultaneously and hold on.

Press C+ and C- simultaneously and hold on.

Press the C+ or C- button, to search the channel that you want to use.

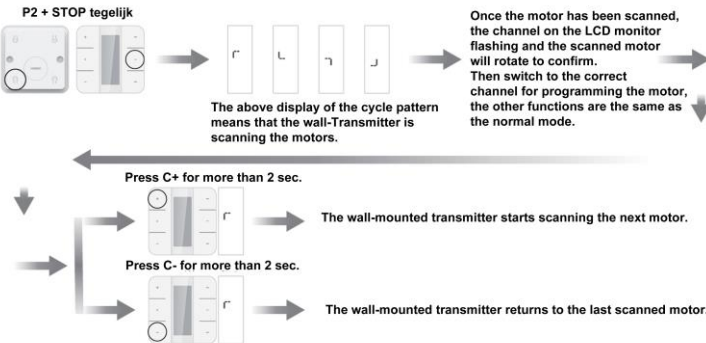
Press 1x STOP



Pairing the remote control transmitter in the memory of the motor

Remark:

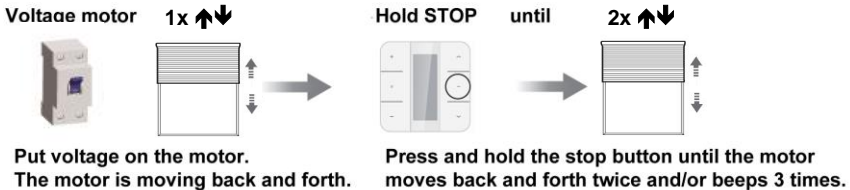
1. The two P2 buttons on the back are both operable.
2. Only available in bi-directional mode.
3. Even though the combination keys are locked, scanning still works.
4. A wall-mounted transmitter can scan up to 15 motors.
5. After 90 sec., the wall transmitter will no longer search for motors and will automatically exit the scanning procedure.
6. If one motor is not found with scanning, it will leave this motor and automatically scan the next motor.



Adding a replacement transmitter, in case of loss/failure of the old transmitter

METHOD 2 (Only Bi-directional)

After power has been applied to the motor, press stop within 10 seconds.



METHOD 3 (Only Mono-directional)

(only possible if the end positions are set)

