

## Manual Breel 15-channel bi-directional emitter TDBU motor Type DD-2762H

Read the manual before you begin the installation. If these instructions are not followed, this may lead to defects and injury in which warranty can't be claimed.

**NOTE:**

This handtransmitter is only suitable for BJE24-TD motor!

This manual can only be used to connect the hand-held transmitter to the motor,  
**NOT to adjust the motor!**

For all manuals, visit: [www.brel-motors.nl](http://www.brel-motors.nl)

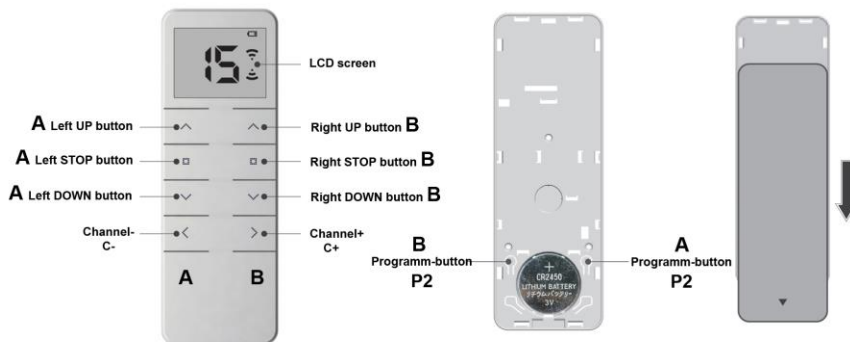
### Technical specifications

- Battery type:
- Frequency:
- Emission power:
- Emission distance:

### Type DD-2762H

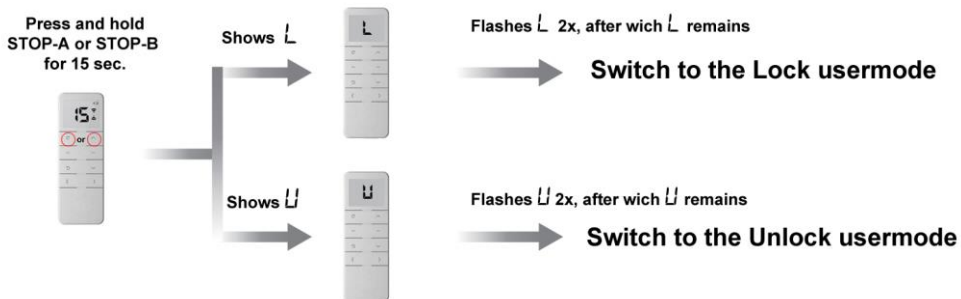
3V 1x CR2450  
433,92MHz  
10 MW  
200 meter open field, 2 walls 35 meter.

### Button specifications



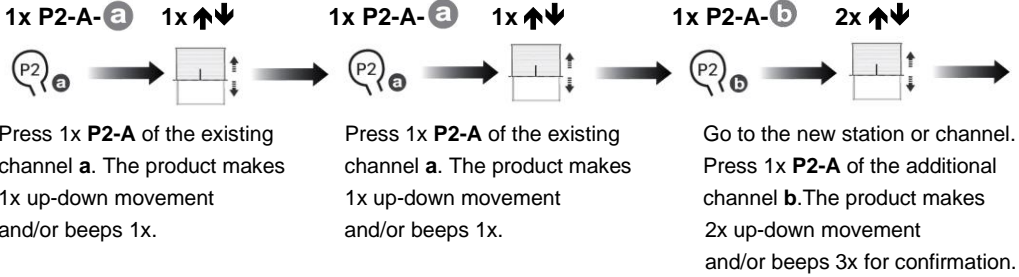
### Usermode

When the remote control is locked, you can operate the motor, but not program it.



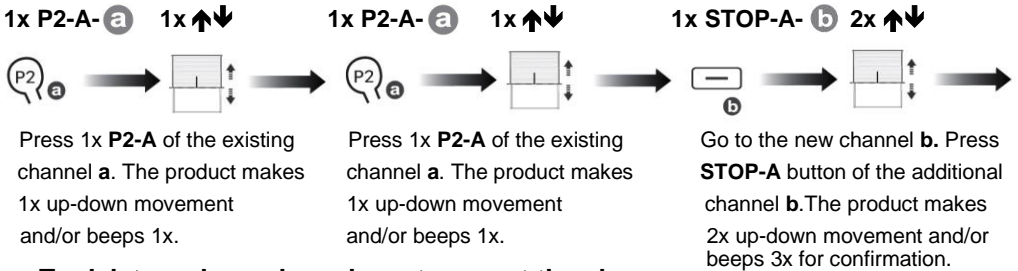
## Pairing the remote control transmitter in the memory of the motor

### METHOD 1



### To delete a channel you have to repeat the above.

### METHOD 2

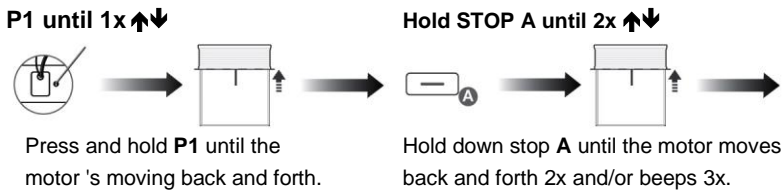


### To delete a channel you have to repeat the above.

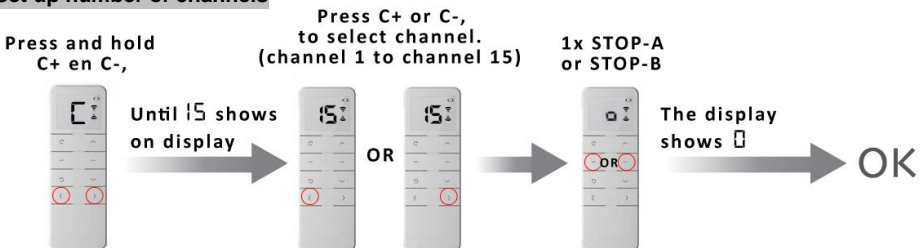
## Adding a replacement handtransmitter, in case of loss/failure of the old hand transmitter

After power has been applied to the motor, press stop within 10 seconds.

### METHOD 3



## Set up number of channels



In programming mode; press the up or down button. You can stop quickly. If you want to change the locked channels, you can repeat above.