

BREL motors is part of:

BREL nederland b.v.

Manual Brel 5-channel bi-directional transmitter with timer

Type DD-2705H

Read the manual before you begin the installation. If these instructions are not followed, this may lead to defects and injury in which warranty can't be claimed.

NOTE:

This manual can only be used to connect the hand-held transmitter to the motor, NOT to adjust the motor!

For all manuals, visit: www.brel-motors.nl

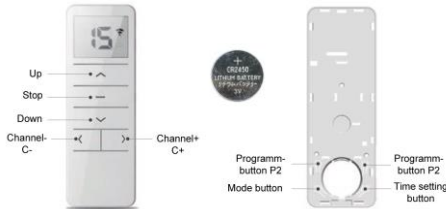
Technical specifications

- Battery type:
- Frequency:
- Emission power:
- Emission distance:

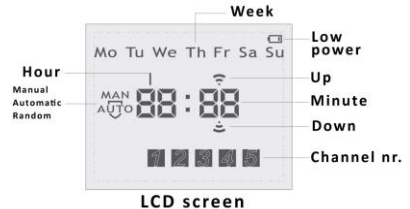
Type DD-2705H

3V 1x CR2450
 433,92MHz
 10 MW
 200 meter open field, 2 walls 35 meter.

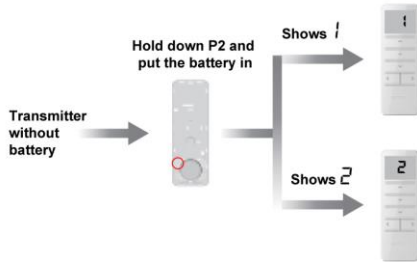
Button specifications



LCD screen



Mono-directional / bi-directional mode switching

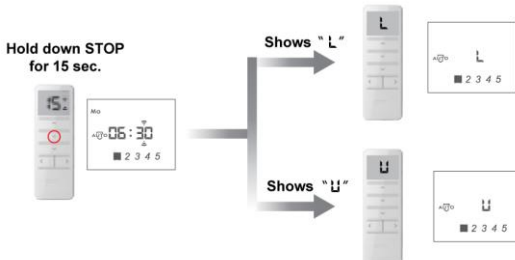


- DD-2705H: the flashes 2x, after which remains.
- **Mono-directional mode**
 (MR, MPE, MEQ, MLE, MTE50, MJE, MCE25, MG, MGLE, DC-50, DC-227, DC-114)
- DD-2700H: the LED flashes 1x.
- DD-2705H: the flashes 2x, after which remains.
- **Bi-directional mode**
 (BRE, BZE, BEQ, BTE50, BJE, BCE, BLE, BPE, BG, BGLE, DD-50, DD-117, DD-227)
- DD-2700H: the LED flashes 2x.

If the motor does not respond, try another mode.

Usermode

When the remote control is locked, you can operate the motor, but not program it.



- DD-2705H: The flashes twice, then the remains.
- **Switch to the Lock usermode**
- DD-2700H: the LED flashes 1x.
- DD-2705H: The flashes twice, then the remains.
- **Switch to the Unlock usermode**
- DD-2700H: the LED flashes 2x.

Pairing the remote control transmitter in the memory of the motor

(Mono-directional and Bi-directional)

METHOD 1

1x P2- **a** 1x $\uparrow\downarrow$

1x P2- **a** 1x $\uparrow\downarrow$

1x P2- **b** 2x $\uparrow\downarrow$



Go to the existing channel **a**.

Press 1x **P2** of the existing channel **a**. The product makes 1x up-down movement and beeps 1x.

Press 1x **P2** of the existing channel **a**. The product makes 1x up-down movement and beeps 1x.

Go to the new channel **b**. Press **P2** of the additional channel **b**. The product makes 2x up-down movement and beeps 3x for confirmation.

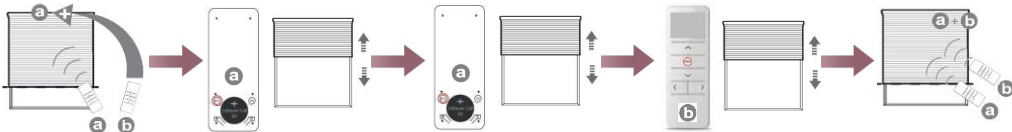
To delete a channel you have to repeat the above.

METHOD 2 (Bi-directional only)

1x P2- **a** 1x $\uparrow\downarrow$

1x P2- **a** 1x $\uparrow\downarrow$

1x STOP- **b** 2x $\uparrow\downarrow$



Go to the existing channel **a**.

Press 1x **P2** of the existing channel **a**. The product makes 1x up-down movement and beeps 1x.

Press 1x **P2** of the existing channel **a**. The product makes 1x up-down movement and beeps 1x.

Go to the new channel **b**. Press **STOP** button of the additional channel **b**. The product makes 2x up-down movement and beeps 3x for confirmation.

To delete a channel you have to repeat the above.

Adding a replacement handtransmitter, in case of loss/failure of the old hand transmitter

METHOD 3 (Bi-directional only)

After power has been applied to the motor, press stop within 10 seconds.

Motor voltage 1x $\uparrow\downarrow$

Hold STOP until 2x $\uparrow\downarrow$



Put voltage on the motor. The motor's moving back and forth.

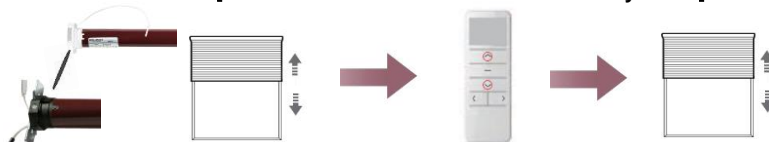
Press and hold the stop button until the motor moves back and forth 2x and/or beeps 3x.

METHOD 4 Only Mono-directional

(only possible if the end positions are set)

Press P1 until 1x $\uparrow\downarrow$

$\blacktriangle \blacktriangledown$ simultaneously $\uparrow\downarrow$

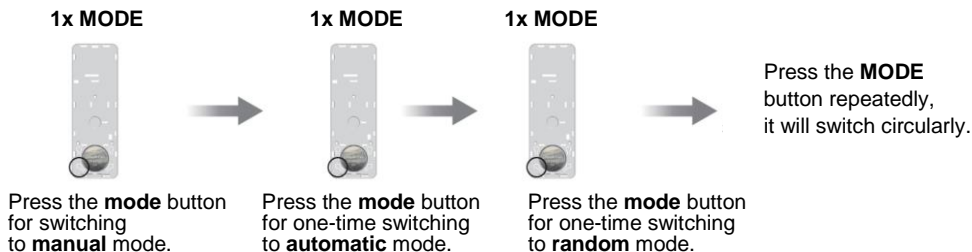


Press P1 until the motor moves back and forth.

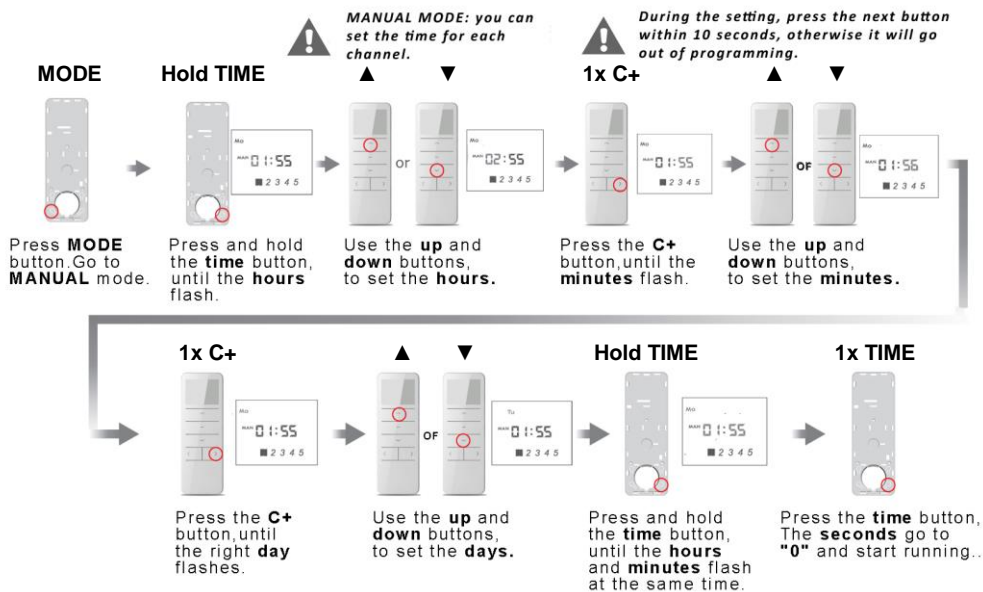
Press and hold up and down at the same time until the motor moves back and forth twice and/or beeps 3x

Changing the Mode

- ① Manual operation (MAN) : Only with manual operation of the motor;
- ② Automatic mode (AUTO) : Both automatic on time and manual operation of the motor;
- ③ Random mode : It switches to automatic time, but randomly in a period of half an hour of the set time.



Setting the current time (MAN)



Setting the time (automatic)

Tijdens het instellen, binnen 10 seconden de volgende toets indrukken, anders gaat hij uit de programmering.



Hold MODE



Press **MODE** button. Go to **AUTO** or **RAMP** mode.

Hold TIME



Press and hold the **time** button, until the time flash.

1x C+



Press the **C+** button, to select the day.



1x STOP



Press **STOP** to confirm the **UP** time. When the product goes up. The hours will flash.



1x C+

▲ or ▼



Use the **up** and **down** buttons, to set the minutes.



Press the **C+**, the minutes will flash.



With the **up** and **down** button, you can set the minutes.



1x C+

▲ or ▼

1x C+



Press **K+** to confirm the **DOWN** time. When the product goes down. The hours will flash.



With the **up** and **down** button, you can set the minutes.



Press **C+**, the minutes flash.



▲ or ▼

1x C+

TIME



With the **up** and **down** button, you can set the minutes.



Press the **C+** to go to, the to go next day. Set this then again as before.



After setting the **UP** and **DOWN** times for the whole week, press the **TIME** key for 3s, the "Hour" and "Minute" will flash, then all settings will be saved. and exits the setting mode automatically...