

Manual Brel bi-directional 1-channel mini remote control Type DD-115H

Read the manual before you begin the installation. If these instructions are not followed, this may lead to defects and injury in which warranty can't be claimed.

PAY ATTENTION:

This manual can only be used to connect the remote control transmitter to the motor, NOT to adjust the motor!

For all manuals go to: www.brel-motors.nl

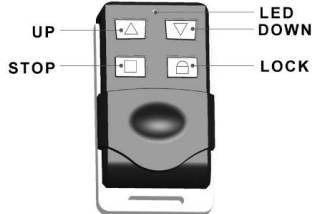
Technical specifications

- Voltage:
- Battery type:
- Frequency:
- Emission distance:
- Work temperature:

Type DD-115H

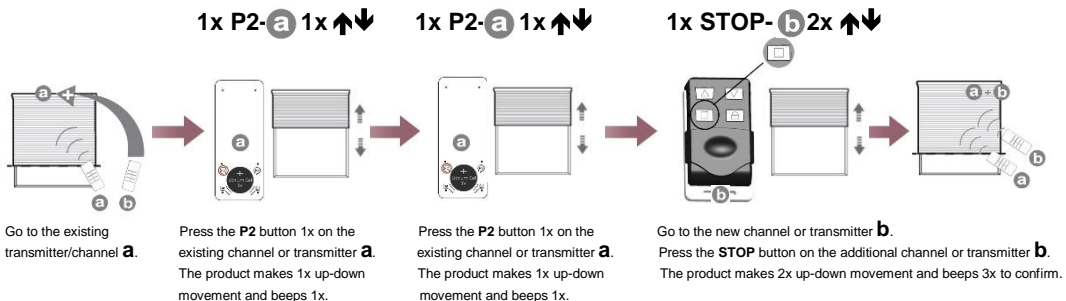
3V
CR2032
433,925MHz
150 meter open field, 2 walls 40 meter
-5°C ~ 50°C

Button specification



Teaching multiple transmitters

You can also add the handheld transmitter by putting current on the motor and pressing the stop button.



To remove a transmitter, repeat the above.

You can **NOT** program the motor with this mini-transmitter!