

Manual Brel 1 and 2-channel wall transmitter Type DC-229 and DC-230

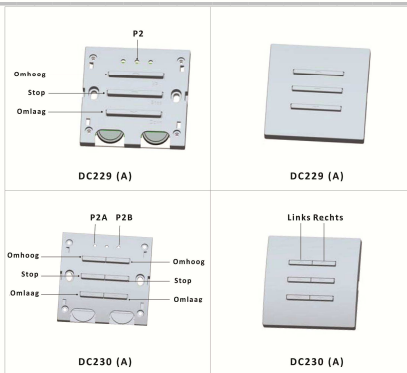
Read the manual before you begin the installation. If these instructions are not followed, this may lead to defects and injury in which warranty can't be claimed.

Technical specifications

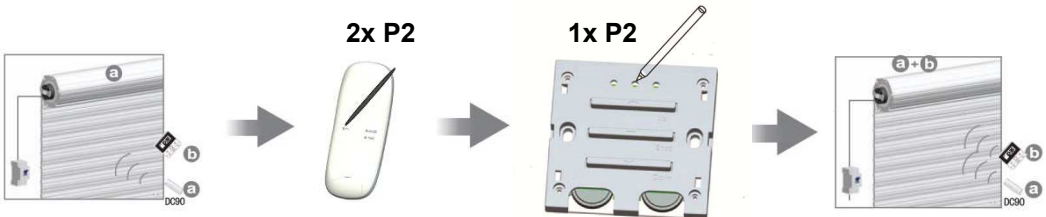
Type DC-229 en DC-230

- | | |
|----------------------|---|
| • Battery type: | 2x CR2032 |
| • Frequency: | 433,92MHz |
| • Emission power: | 10 MW |
| • Emission distance: | 100 meter open field
2 walls 20 meter. |

Button specification



Teaching multiple transmitters



Press 2x on the P2 of the existing emitter a.

Press 1x on the P2 of the emitter b.

the emitter is ready.