

Manual Brel 1-channel receiver with building edge Type DC-227

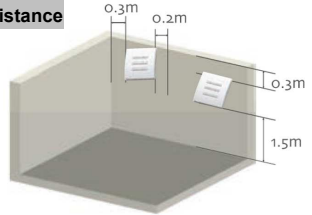
Read the manual before you begin the installation. If these instructions are not followed, this may lead to defects and injury in which warranty can't be claimed.

Technical specifications

Type DC-227

- Battery type: 2x CR2032
- Frequency: 433,92MHz
- Emission power: 10 MW
- Emission distance: 100 meter open field
2 walls 20 meter.

Installation distance

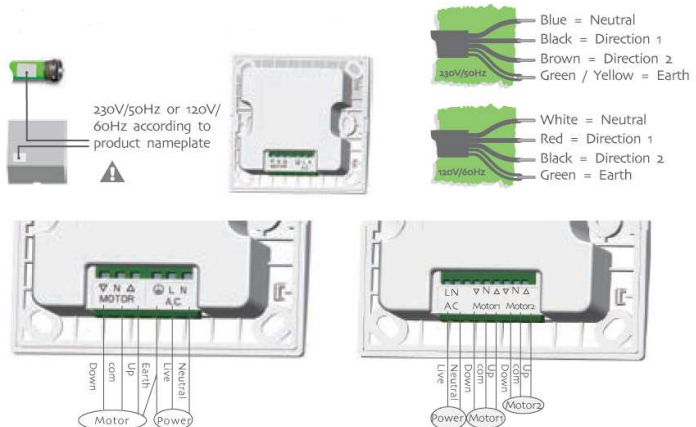


- 1.The smallest distance between the receiver and the ground >1.5m
- 2.The smallest distance between the receiver and roof >0.3m
- 3.The smallest distance between the receiver and receiver >0.2m

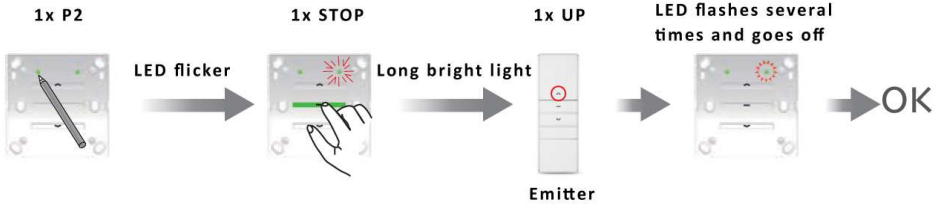
Button specification



Wiring chart

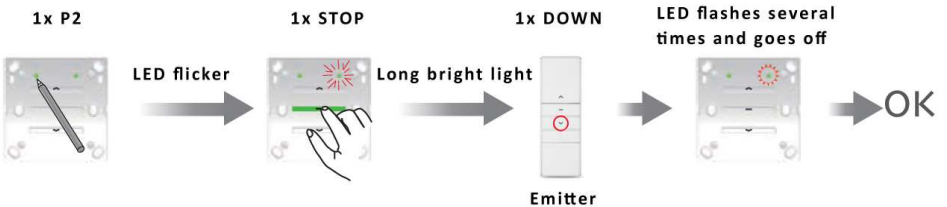


Teaching emitter

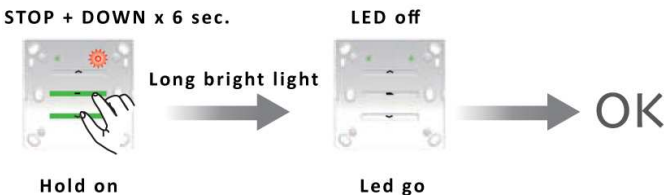


During the setting, the time between two operations must be shorter than 4 sec. otherwise it will quit the setting.

Cancel one channel of emitter



Delete all the emitter channels



Dot-move setting

