

BREL motors is part of:

**BREL** nederland b.v.

## Manual Brel transmitter with terminal switch (Dry contact remote)

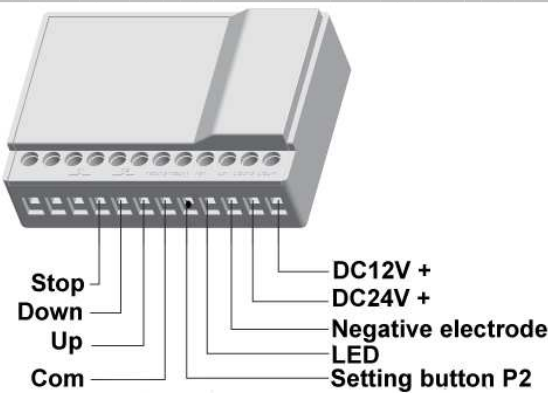
### Type DC-1149

Read the manual before you begin the installation. If these instructions are not followed, this may lead to defects and injury in which warranty can't be claimed.

**warning:**

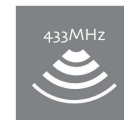
Children cannot recognize the dangers of electrical equipment and may therefore not work with it. It is important to follow this instruction for your own safety.

### Functions



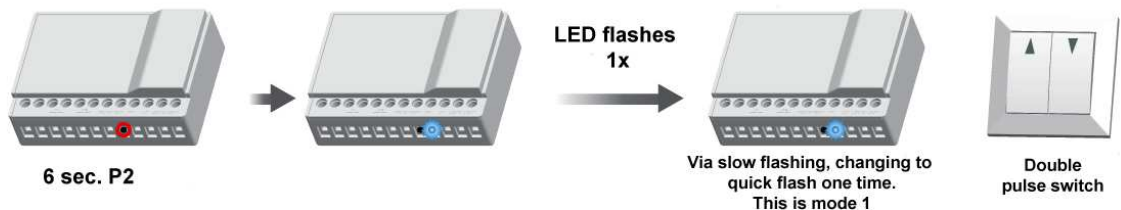
### Technical specifications

- Input voltage: 12V / 24V
- Frequency: 433 MHz
- Power: 10 MW
- Working temperature:
  - Normaal gebruik: -10°C tot -50°C

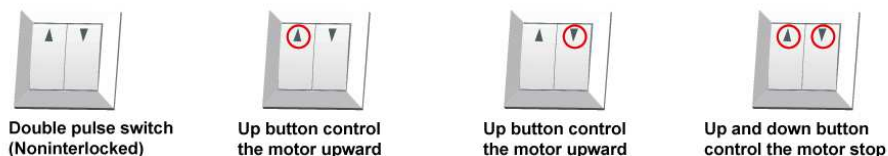


### 4 kinds of mode switching

#### MODE 1



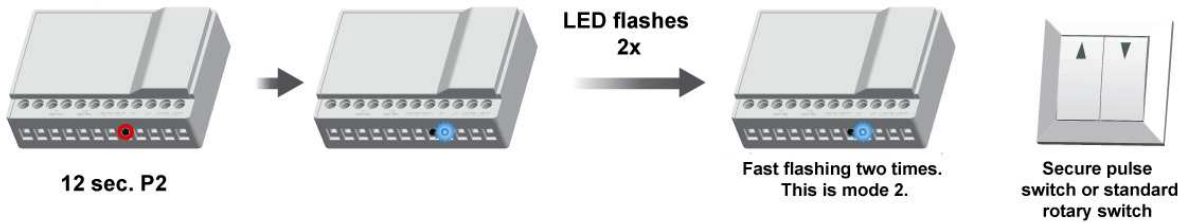
#### Operating



#### Setting up as first emitter



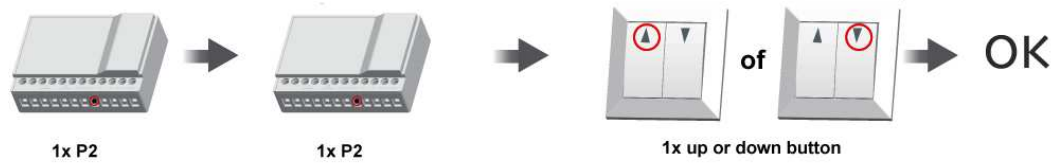
## MODE 2



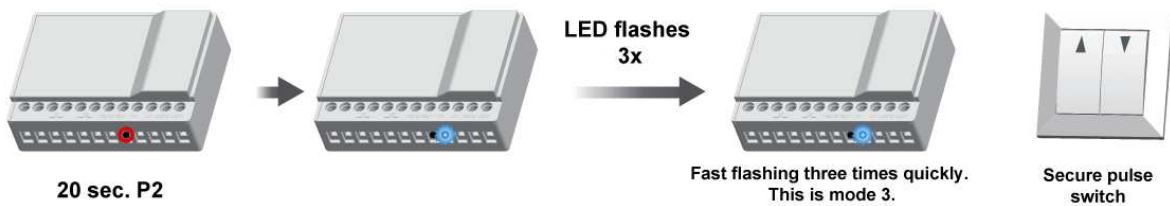
### Operating



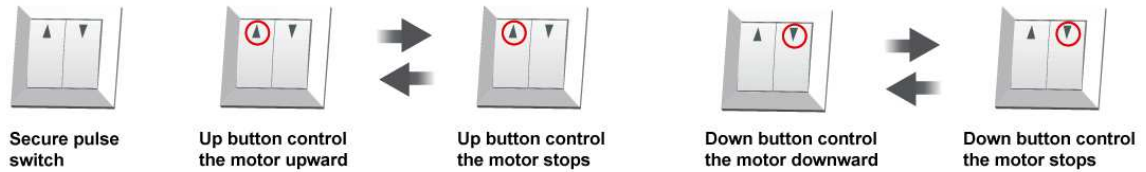
### Setting up as first emitter



## MODE 3



### Operating



### Setting up as first emitter



## This function works in mode 1, 2 en 3



### Operating



### Setting up as first emitter

