

BREL motors is part of:



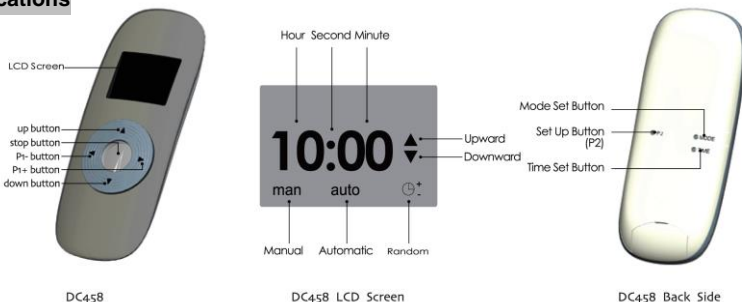
## Manual Brel emitter with clock

### Type DC-458 and DC-920

**Read the manual before you begin the installation. If these instructions are not followed, this may lead to defects and injury in which warranty can't be claimed.**

Technical specifications	Type DC-458 and DC-920	Note:
• Battery type:	3V CR2430	The time difference between automatically controlling up and down, must be atleast 32 minutes, otherwise there will be ERROR on the display.
• Frequency:	433,92MHz	
• Emission power:	10 MW	
• Emission distance:	200 meter open field 2 walls 35 meter.	

### Button specifications

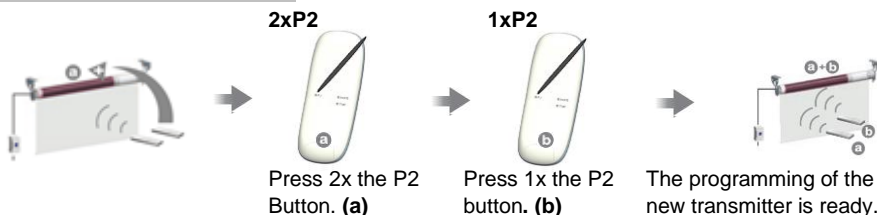


### Operates with these BREL motors and transmitters:

**Motors:** MR, MEV, MCE, MDE, MLE, MJE, MTE, MEQ, MPE.

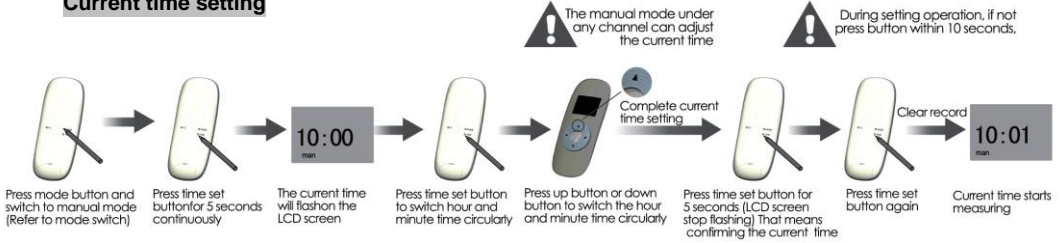
**Transmitters:** DC-50, DC-90, DC-92, DC-94, DC-101, DC-109, DC-114, DC-227, DC-252, DC-253, DC-292, DC-305, DC-306, DC-313, DC-2700, DC-2702.

### Teaching multiple transmitters

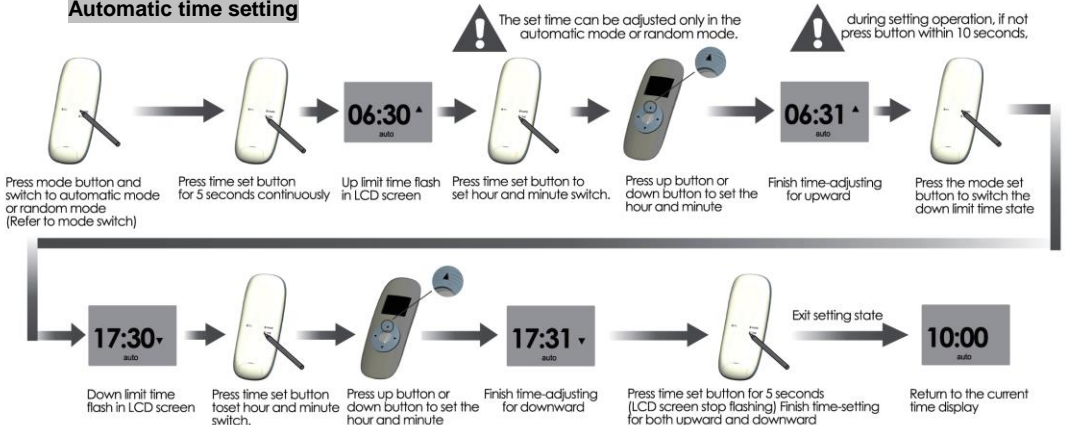


**To delete one channel , you must repeat the above operation.**

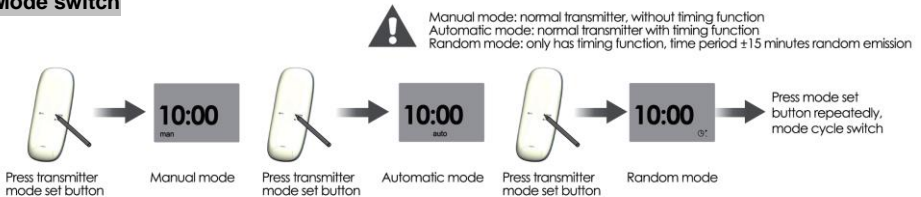
## Current time setting



## Automatic time setting

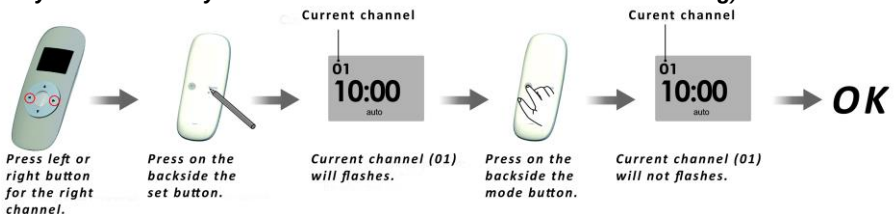


## Mode switch



## Activating / Deactivating a channel

(Only DC-920 allows you to exclude one channel of the automatic setting)



Only the automatic modes or random modes, press the P2 button to select the channel or remove.