

BREL motors is part of:



## Manual Brel radio signal amplifier

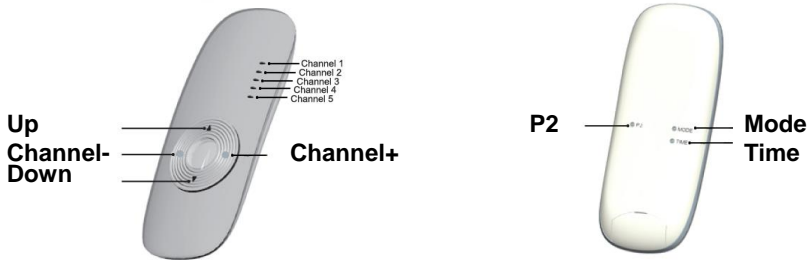
### Type DC-425

Read the manual before you start the installation. If this instruction is not followed, you can this leads to damage where no claim can be made on the guarantee.

#### Warning:

Children can not recognize the dangers of this electrical equipment and may therefore not work with it. It is important to carefully follow this manual for your own safety.

#### Button specifications



When all de LED lights burn for the DC-306 or for the DC-313 channel 0, all products are then active. (mode and time have only a function on a emitter with a timer)

#### Operates with these BREL motors and transmitters:

**Motors:** MR, MEV, MCE, MDE, MLE, MJE, MTE, MEQ, MPE.

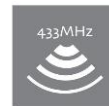
**Transmitters:** DC-50, DC-90, DC-92, DC-94, DC-101, DC-109, DC-114, DC-227, DC-252, DC-253, DC-292, DC-305, DC-306, DC-2702.

#### Technical data of the amplifier

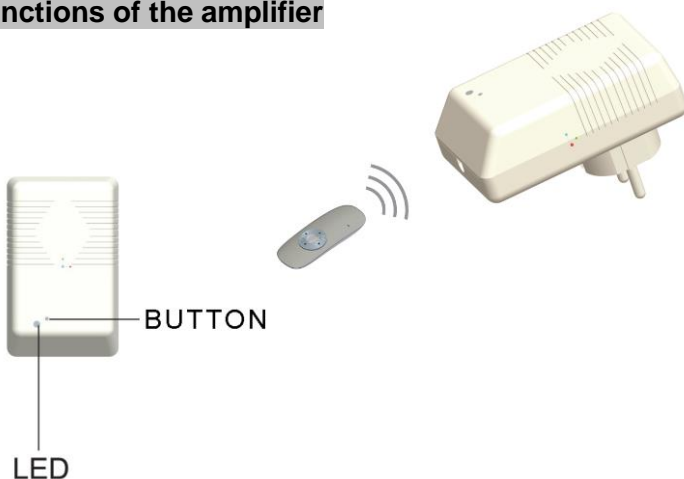
- Voltage motor:
- Power:
- Ampèrage
- Moisture and dust resistance:
- Storage capacity of channels is up to 20 channels
- Working temperature:
  - Normal use: -10°C tot +40°C
  - Heavy use: -20°C tot +70°C

#### Type DC-425

220V  
900 Watt  
4 A  
IP44



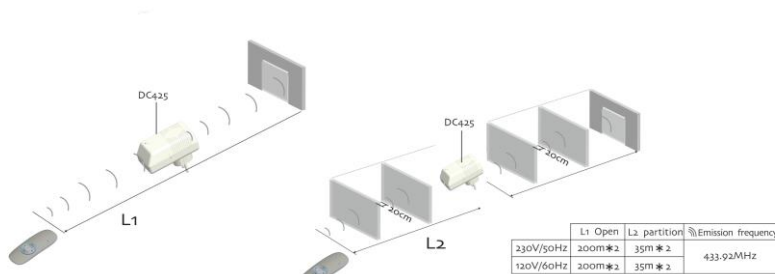
#### Functions of the amplifier



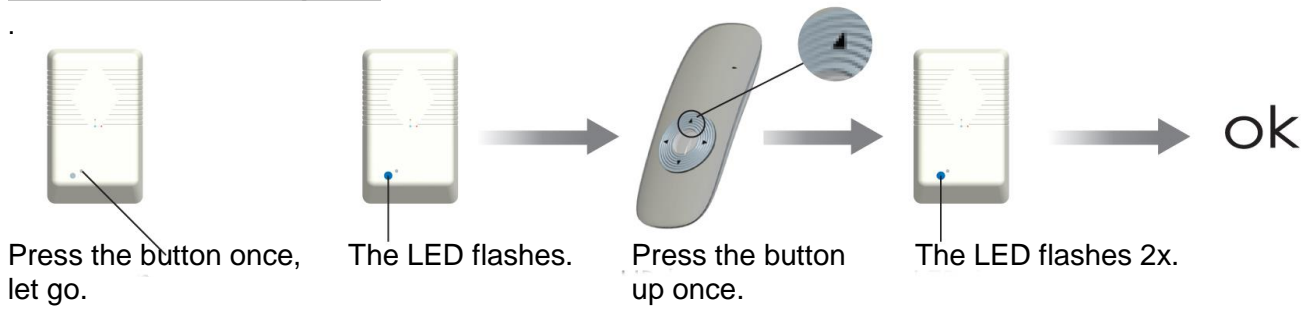
#### Reach

L1 = 100 meter

L2 = 25 meter



**Installation of the amplifier**



**Step 1 Reading in the first transmitter in the memory of the motor**

