

BREL motors is part of:

**BREL** nederland b.v.

**Manual Brel mini remote control**  
**Type DC-115**

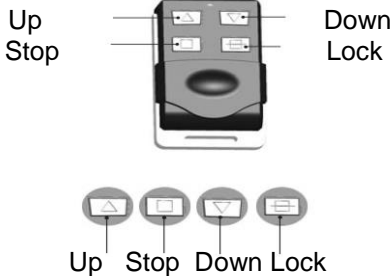
Read the manual before you begin the installation. If these instructions are not followed, this may lead to defects and injury in which warranty can't be claimed.

**Technical specifications**

**Type DC-115**

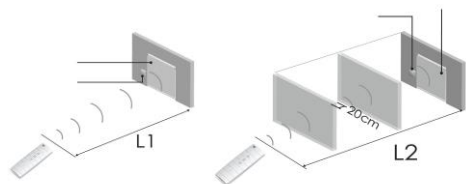
- |                      |   |
|----------------------|---|
| • Input voltage:     | 12V                                       |
| • Battery type:      | 27A 12V                                   |
| • Frequency:         | 433,92MHz                                 |
| • Emission distance: | 200 meter open field<br>2 walls 30 meter. |
| • Work temperature:  | Normal use:-10°C tot +50°C                |

**Button specification**



**Reach**

L1 = 100 meter L2 = 25 meter

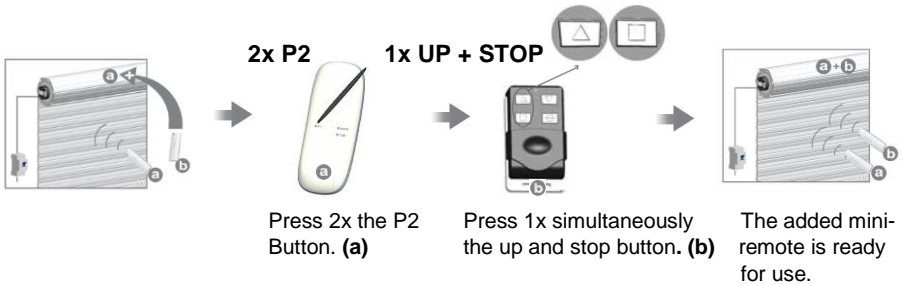


**Operates with these BREL motors and transmitters:**

**Motors:** MR, MEV, MCE, MDE, MLE, MJE, MTE, MEQ, MPE.

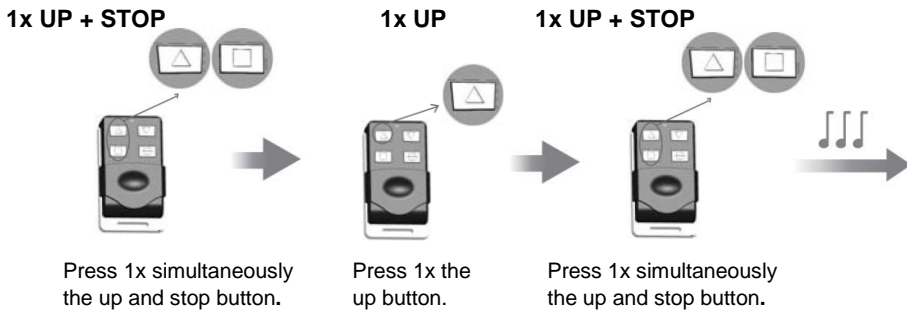
**Transmitters:** DC-50, DC-90, DC-92, DC-94, DC-101, DC-109, DC-114, DC-227, DC-252, DC-253, DC-292, DC-305, DC-306, DC-2702.

**Teaching multiple transmitters**



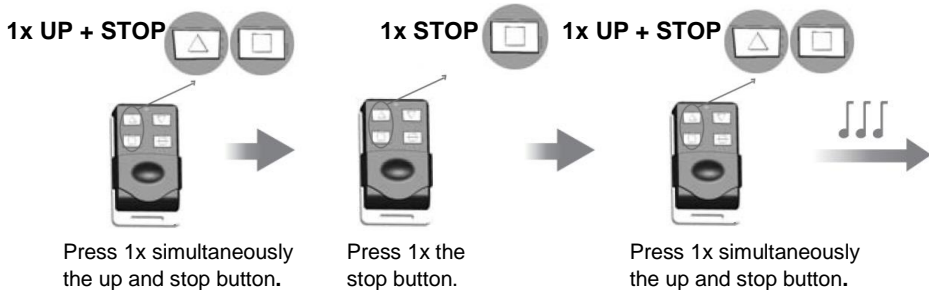
*Up to 10 remotes per receiver. You can control as many receivers as you wish with 1 channel.*

**Dot-move setting**



*If you want to switch the dot-move setting back to normal operation, repeat the above procedure.*

**Delete all the emitter channels**



*All remotes are removed from the receiver's memory.*