

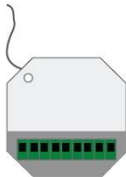
Manual Brel Built-in wireless receiver Type DC-114

Read the manual before you begin the installation. If these instructions are not followed, this may lead to defects and injury in which warranty can't be claimed.

Technical specifications



- Receiver in the mode of dot function, press up button and down button within 2 seconds, emitter control motor working in dot function; If continuous press more than 2 seconds motor will continuous working
- When in the group control mode, the setting is unworkable

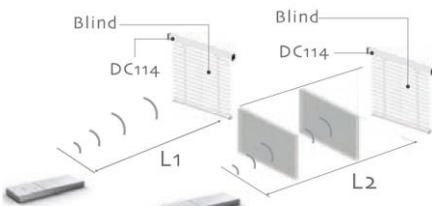


DC114 Receiver

The standard type DC114 can store 20 valid channels, if connect new channels after storing 20 channels, from the second channel will be repeating covered.

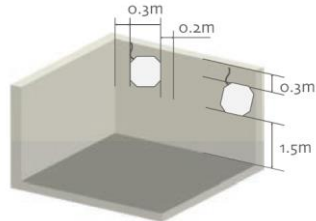
Maximum output power: 200W

Controle range



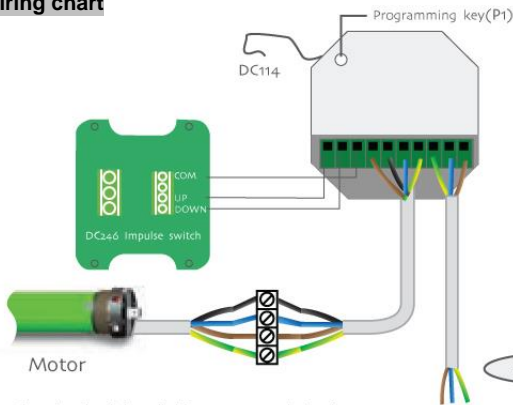
	L1 open	L2 partition	Emission frequency
120V/60Hz	200m	35m	433.92MHz
230V/50Hz	200m	35m	433.92MHz

Installation distance

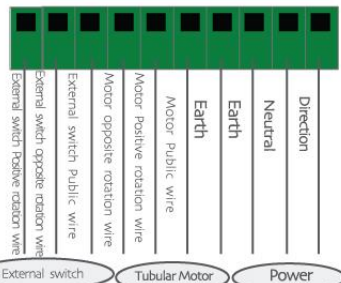


- The shortest distance between receiver and ground $\geq 1.5m$
- The shortest distance between receiver and roof $\geq 0.3m$
- The shortest distance between receiver and receiver $\geq 0.2m$

Wiring chart



P1 is Setting button, press P1 once, it works the same as turn on the power. The external switch is not available before programming.



Please connect the wire properly according to the diagram. Don't reverse the neutral and live wire. Caution!

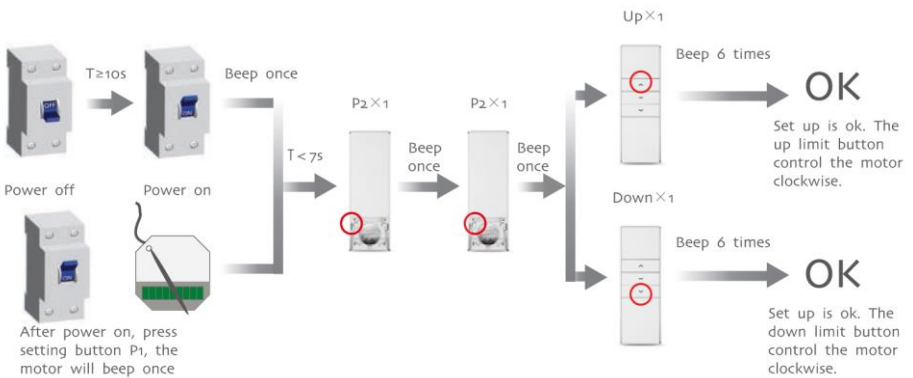
The external switch applied by our company is Impulse switch DC246. If you use other switches, our company will not take responsibilities for the above consequences.

POWER:
230V/50Hz
120V/60Hz

Matchable emitter

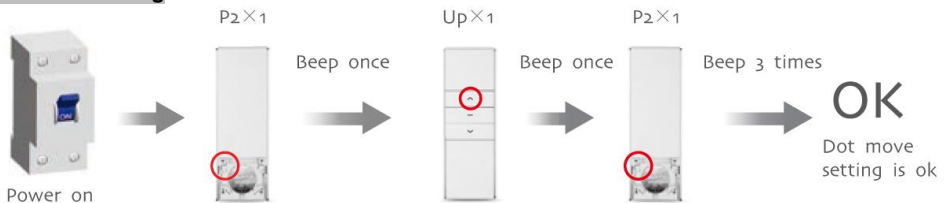


Teaching emitter



During the setting, the time between two operations must be shorter than 4 sec. otherwise it will quit the setting.

Dot-move setting



Delete all the emitter channels

